



Northwoods Regional ATV Trail Alliance Meeting (NWRATA)

When: October 9, 2024

Where: Village Inn, 6524 County Rd. 58 NE, Outing MN 56662

Time: Social Hour Beginning at 5:00pm, Meeting starts at 6:00pm

Call-In: Dial 605-313-5798, Enter Access Code 3337593#

Hosted by: Eagle Country Snowmobile & ATV Club

Agenda

Pledge of Allegiance

Welcome / Introduction of New Attendees - Alliance Chair Harlan Kingsley

Members in attendance - 21 people in attendance including Erv Kleinschmidt on call in.

Secretary Report of July 2024 minutes - Becky Tuckenhagen. Perry May 1st, Terry Tuckenhagen 2nd, approved.

Treasurer Report – Ed Schulze. Terry Tuckenhagen 1st, Jeremy Hohensee 2nd approved

Beginning balance 6-30-2024 \$2962.38

Ending balance 9-30-2024 \$3088.14

Deposits (Ride and Rally sponsorship)(misc) \$ 1471

Subtractions (Ride and Rally sponsorship) (Axtell food) (\$1345.24)

Discussion Points:

1. ATVMN Ride & Rally - Summary (Alliance Logo not on ½ throttle banner) sent check in on August 12th cashed on 15th of August. On power point shown at Ride and Rally but not on banner. ATVMN said they did not have our logo. Believe they did. Perry will talk to Dean about look into getting another logo that would include all the club's logos. This could get too busy and would need changing every time a new club joined. Perry to follow up with Chris and Jeff Tidholm about getting a new logo which includes word alliance. Steve Ferraro to see if Alliance sponsorship shows up on the ATVMN website.
2. ATVMN Ride & Roast 2025 -Eagle Country to host Craig – recent meeting - formed a committee to move forward. Event location - Remer May 17, 2025
3. Selfie Stations (Evergreen PAC, Mille Lacs Drift Skippers, White Pine Riders) Evergreen Pac is installed on Kettle River Bridge by Denham. DriftSkippers is ready, will be installed on Red top. Waiting on White Pine Riders, Next year installation.

4. Northwoods Trails Improvement Grant #1 & #2 Progress and key dates Perry - Chris says to get all the money for 1st part of trail Grant. (outstanding invoices from clubs to Aitkin County are due by approximately May 1, 2025) Chris Johnson to verify. So Chris can get them into State by June 30, 2025.
5. Northwoods Jamboree at Axtell held on Sept. 28 – Summary Between 60 – 70 people hotter and dustier this year. Having lunch worked well. Thanks to Ed and Fred for getting the food and to Chris doing the cooking. Next year maybe we should have a meet and greet at the entrance to invite everyone to join the activities. Ed Schulze had the banner made by Glen's Sign Dezin. No bill yet?
6. Solana State Forest Trail Planning on October 16th, at Aitkin High School Perry May - phase 2 planning on all state forests. Perry meeting with Ron Potter, Erv K about a specific issue – there is already a bill to build the trail on east side of Mille Lacs and will go through the Solana state forest. DNR needs to know that the bonding bill is already approved even though no trails on ground yet. Need to show a lot of support at this meeting.
7. Next year GIA Applications due to Sponsors before 11/30/2024.
8. Need for Soo line trail magnet? Aitkin County wants the county to take care of the Soo Line, Carlton County is different, Evergreen Pac does a lot on the Soo Line. Most clubs in Aitkin County would not get reimbursement for doing the soo line. Eagle Country takes care of Cass County. Mille Lacs County did kick-off on Soo Line improvement. Each county owns their own part of Soo Line except in Cass County by Federal dam is Federal. Magnets can cost around 15k. TBD.
9. Electronic Map in pdf form. Perry May – our current map is not in electronic form. With all the advertisements it is too large. Needs to be broken down. Perry might talk to DNR (has GIS data) to see if it can be put on Avenza maps as the whole thing. Perry to talk to Dave Halsey to see if it can get put on Ride Command. **Update: Perry will work with MNDNR to create an electronic Avenza Northwoods ATV Trail System map**
10. Letters to our Legislators?? After Election send out in January to new reps to make them aware of the Alliance and all the clubs involved.
11. Possible new Alliance Clubs (Eastern Morrison County, Northern Pine Riders, Rapid Riders, Itasca Trail Riders) Rapid Riders interested in joining. Their trails were originally part of the original Northwoods 70, UPM Blandin trails. Northwoods system is one of largest trails systems in Midwest, the most traffic, largest interconnecting system. Only trail system that has connections to be able to ride to Wisconsin, Michigan, and International Falls legally.
12. ATV Survey – Chris J presented by Becky. Please fill out survey. See handout at end of notes.
13. Signage – Ed Schulze MNUSA (Snowmobile org) reported that there are way too many caution signs that do not explain what caution it is. If there is an accident where the caution sign is not labelled specifically listing the caution, then lawsuits have occurred. Also use diamonds to denote culverts instead of caution. Perry is looking into this to see if this could also apply to ATV trails.
Update – 1. MNDNR does not require caution signs explanation. This is guidance from MNUSA and not from MNDNR - No changes for GIA ATV trail sign guidance
14. 501(c)3 and Beneficial Ownership (FINCEN) Becky still working on it. Chris contacting someone about the 501c(3)
15. New email for the Alliance. northwoodsatvalliance@gmail.com
Becky will send out notes to both the original email and new one. Just in case the new one goes to your junk mail.

Aitkin County updates:

- Widseth Smith Nolting (WSN), and Mille Lacs East Side ATV Trail work
- MN Wheelin Ads – 250 miles of ATV Trails? Invite the economic manager from Aitkin County next time.
- Grading contract and performance - ??

Club / Trail Updates – All

- Blind Lake Club – (Blind Lake Loop & Connector) New shelter put up off Cty Rd 68. Fixed where spot below where north and south loops come together. Always a muddy, tricky spot to maneuver.
- Evergreen PAC - (South & North Soo Line) Carlton County. club ride on 10-12. Looking to hire a guy with an excavator to fix part of trail. 8+ miles.
- Up North Riders - (Lawler Loops) Shelter going up on south loop. Skid steer tracks on puncheons entrances, work in progress. Still catching up on repairing trails from rain, dry enough to do now
- White Pine Riders - (Solana) working on maintenance. Working on puncheon bridges on Soalna trails
- Mille Lacs Drift Skippers - (Red Top, Foxy, South Soo Line) no update
- Northwoods Quads – (Hill City, Moose River Connector) putting fill down on section of trail, need to work on 12 year old puncheon bridge that was damaged in spring.
- Over the Hills Gang – (Emily/Outing/Moose River, Emily /Blind Lake) New County park on trail -Emily Park. The park has ATV parking area and can get directly to trail. Trails are dry and dusty as are others. Working on hwy 6 ditch. Trying to find dozer operator with small blade 8ft. Jason Gilbert looks like a possibility
- Eagle Country - (North Soo Line /Cass County) Pavilion got started a week or two ago. It should be done by late fall. 88 toilets in the pavilion. Section of trail still closed up to the north. Working on replacing culverts.
- Milles Lacs Trails Inc – (Mille Lacs East ??) no update.
- Aitkin County – (Rabey, Rat Lake, Soo Line, Axtell) No Chris, handout provided, see attached
- UPM Jerry McKnight -- filling in washouts from earlier rain- dumping a lot of gravel in spots. Want to change part of trail, need to talk to Chris Johnson ACLD

Guest Mark Gossman Cass County Land Department.

Harlan – Perry Want ATVMN by-laws changed to state that no money for new trails will come out of the ATV dedicated account until maintenance fund for Grant-in-Aid is fully funded. The GIA maintenance funding account should be increased to fully fund trail Maintenance requests.

Open Forum

- Next Alliance meeting January 15, 2024
- Host: Blind Lake ATV Club
- Site TBD. 40 Club Aitkin or Block North possibilities.

Adjourn: Frank Turnock 1st, Fred Neumann 2nd Adjourned.



Northwoods ATV Trail Alliance: ACLD update



Intro:

Here comes the Fall you know what that means... Hunting??? "No, its grant writing season!!!!

ATV Trails

AITKIN COUNTY TRAILS (I.E. NORTH SOO LINE AND SOUTH SOO LINE, RABEY LINE)

- **North Soo line:** Multiple projects throughout the summer months have been being completed. Contract 1 dedicated monies have been expended that were allocated for the North Soo line. Contract 2 are now being planned for use and bids to contractors are being Completed.
- **South Soo line:** Work with Grading the Soo lines and beaver mitigation have been the two major areas being worked on. Rental of an Excavator for ditching in Arthyde was continued.
- **Rabey Line:** Work between the highway 200 and River Road Approx 3 miles of Trail reforming is to be started in the next Month. Trail closure may be introduced if necessary.
- **Rat Lake Connector:** funding was expended on the northern route of the Rat lake connector trail. Further work in the 2025 season will continue on to the intersection with the Township managed area for completion of Trail foot print rehab. The section of ATV Trail along hwy#3 is in need of maintenance as well use of the DNR roving crew and contractor for class 5 will be sought also.

AITKIN COUNTY TRAILS: NEW TRAIL – MILLE LACS EAST SIDE TRAIL UPDATE

- WETLAND DILENEATION COMPLETE 9/24/2024
- SOLANA STATE FOREST ATV DEDICATED TRAIL PUBLIC MEETING 10/16/2024
- MEETING WITH WSM SCHEDULED FOR 10/17/2024 FIELD VISIT W/COUNTY,DNR, BWSR ON WETLAND DILINEATIONS PERTAINING TO THE MILLE LACS ATV TRAIL.
-

TRAF-X COUNTERS:

- **SEE ATTACHED PDF for information on the ATV Counts**

OTHER ATV TOPICS:

- **ECONOMIC IMPACT STUDY HAND OUTS ARE NOW HERE**
 - The handout version of the Economic impact study is now available.

Thank you for riding ATVs/ OHVs in Aitkin County

We appreciate your insight!

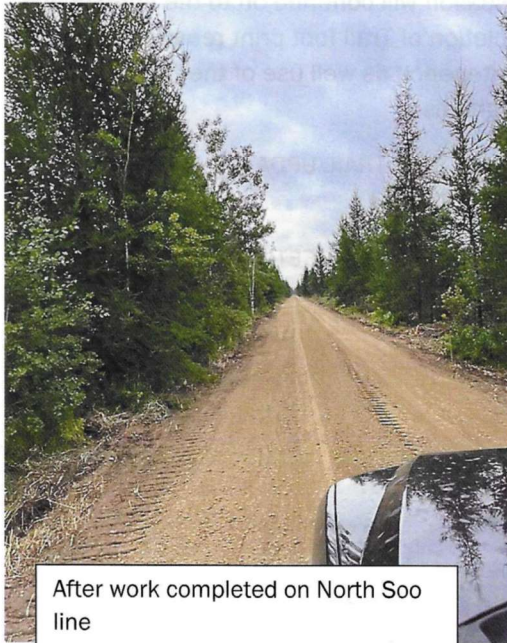
Please take a few minutes to complete the voluntary survey that is accessible through the QR code or via the link. Your answers will be **confidential** and only University of Minnesota will have access to the full responses. Published reports using the information you provide will only contain summarized information.

Questions? Contact John Bennett at
jbennett@umn.edu or (218) 726-6471



Online at z.umn.edu/atvohv
or scan the QR code.

University of Minnesota Extension is an equal opportunity educator and employer. To request disability accommodations, direct requests to 812-624-1222



After work completed on North Soo line



Before work completed on North Soo line

This should say 2019-2024

NORTHWOODS ATV REGIONAL TRAIL SYSTEM: TRAFFIC COUNTS 2019-2022

Year	Site	Jan	Feb	Mar	Apr	May	Jun	Jul	Aug	Sep	Oct	Nov	Dec	Monthly use
2019	Axtell						2,420	1,322	1,507	1,895	977	1,130		9,251
	Berglund Soo Line										688	122		810
	Blind Lake Connector					558	244	313	410	308	207			2,040
	Hill City Connector					1,339	1,496	862	1,434	827	597			6,555
	Lawler Loops					450	325	423	472	495				2,165
	Lawler Soo Line											111	58	169
	Rabey Line					298	535	285	404	376	219			2,117
	Solona Loop					1,381	803	906	1,045	1,433				5,568
	Solona Soo Line											1,013	345	1,358
	Swatara Soo Line											558	403	961
														30,994
														All trails year total
2020	Axtell						2,065	2,207	2,619	2,497	2,471	1,384		13,241
	Berglund Soo Line					360	1,005	1,142	1,415	1,122	1,163	1,178		7,024
	Blind Lake Connector						515	450	581					1,546
	Hill City Connector					93	1,548	1,385	1,946	2,075	996	24	0	8,066
	Lawler Loops							579	531	667	1,067	804		3,647
	Lawler Soo Line					75	371	429	492	448				1,740
	Rabey Line						429	624	537	735	738	495		3,558
	Red Top						4,079	2,542	2,421	2,866				11,907
	Red Top Soo Line						2,040	1,491	1,629	1,883	2,010	1,269		10,322
	Solona Loop						1,648	2,201	1,744	2,104	2,438	1,884		12,019
Solona Soo Line						1,608		1,729	1,645	2,154	1,366		8,502	
														81,573
														All trails year total
2021	Axtell						2,455	1,069	2,442	1,133	1,705	1,163	170	10,137
	Berglund Soo Line							966	1,105	1,112	937	658	163	4,941
	Blind Lake Connector							420	531	604	1,737	3,599		6,891
	Hill City Connector						1,552	1,374	1,376	1,371	2,126	1,788	22	9,608
	Lawler Loops						835	389	596	276	105		3,142	4,548
	Lawler Soo Line							383	540	389	406	419	53	2,190
	Rabey Line						792	413						1,206
	Rat Lake ATV								0	1	707	2,467		3,175
	Red Top							1,776	3,482	2,044	3,643			10,944
	Red Top Soo Line							450	1,587	1,252	1,840	1,239	287	6,655
Solona Loop							1,101	1,781	1,388	1,866	1,367	377	7,879	
Solona Soo Line						1,991	885	1,562	1,746	2,006	1,499	403	10,093	
Swatara Soo Line							1,830	874	805	1,187	1,304	150	6,150	
														89,761
														All trails year total
2022	Axtell						1,895	1,932	1,883	8,548				14,257
	Berglund Soo Line							966	726	2,217	1,234	1,173	745	195
	Blind Lake Connector							2,155	646	2,534	2,429	3,478	265	14,167
	Hill City Connector							1,710	1,256					2,966
	Lawler Loops			1,781	1,966	1,932			579	335				914
	Lawler Soo Line							671	279	488	439	541		2,418
	Rabey Line							460	543	630	612	620	1,039	3,904
	Rat Lake ATV							372	557	1,222	680	559	629	520
	Red Top							4,981	3,540	5,041	4,040	3,929	3,787	465
	Red Top Soo Line							1,219	878	1,301	1,297	1,000	979	220
Solona Loop							2,098	1,007	1,438	1,259	1,775	1,674	675	
Solona Soo Line							1,939	989	1,524	1,424	1,689	1,581	405	
Swatara Soo Line							1,541	1,529	2,630	2,418			8,118	
														110,692
														All trails year total

NORTHWOODS ATV REGIONAL TRAIL SYSTEM: TRAFFIC COUNTS 2019-2022

Year	Site	Jan	Feb	Mar	Apr	May	Jun	Jul	Aug	Sep	Oct	Nov	Dec	Monthly use
2023	Axtell						2,466	420	2,295	1,691	2,087	1,322		10,281
	Berglund Soo Line						1,533	654	1,769	1,857	563	1,381		7,757
	Blind Lake Connector						2,297	1,686	2,983	1,817	2,411	2,545		13,740
	Emily Blind Lake							1,512	2,075	1,443	2,003	1,488		8,522
	Hill City Connector						2,049	1,311	2,042	1,257	1,540	1,310		9,510
	Lawler Loops							368	620	480	945			2,413
	Lawler Soo Line							503	553	458	592	408		2,514
	Rabey Line							599	366	457	673	657		2,751
	Rat Lake ATV						731	487	820	589	1,019	671		4,317
	Red Top						5,701	3,289	4,244	3,329				16,563
Red Top Soo Line							925	1,804	1,340				4,069	
Solona Loop							2,536	1,142	1,947	1,335	1,479	1,465	9,904	
Solona Soo Line							2,379	1,101	2,652	1,099	1,578		8,810	
Swatara Soo Line							3,087	2,315	5,594	2,399	1,678	1,392	16,465	
														117,614
														All trails year total
2024	Axtell						2,177	1,291	2,149	2,299	2,020	1,838		11,774
	Berglund Soo Line						3,904	1,744	2,339	1,754	1,518	1,771		13,030
	Blind Lake Connector						4,259	1,968	2,296	1,824	2,595	3,561		16,503
	Emily Blind Lake						1,229	1,680	1,841					4,750
	Hill City Connector						1,351	2,188	1,218	1,392	1,565	2,046		9,760
	Lawler Loops						1,034	1,791	474	389				3,688
	Lawler Soo Line						671	377	410	517				1,975
	Rabey Line						562	689	725	597	1,012	1,058		4,643
	Rat Lake ATV						573	480	852	458	939	1,120		4,422
	Red Top						2,728	3,301	4,224	3,038				13,291
Red Top Soo Line						3,841	1,628	1,810	1,715	1,782	1,705		12,481	
Solona Loop						1,261	1,220	1,287	1,593	1,585	1,289		8,235	
Solona Soo Line						2,090	1,538	1,532	1,580	1,685	1,408		9,834	
Swatara Soo Line						4,778	1,299	1,448	1,900	1,768	1,930		13,123	
														127,508
														All trails year total